

FRESHMAN GUIDE

STUDENT INDEPENDENT!

**Guide designed
and written
by students
for students**



Index

Reading Notes	2
Welcome to Poli!	3
The University.....	5
TEACHING, COURSES AND CREDITS	5
STUDY PLAN AND EXAMS	6
POLITECNICO: CAMPUS	8
DIGITAL SERVICES	10
STUDENT SERVICES	12
INTERNATIONAL EXPERIENCES	14
Welfare and useful info.....	15
UNIVERSITY COSTS: FEES	15
SCHOLARSHIPS, DSU CALL AND 200-HOUR CALL	17
HEALTH CARE AND PSYCHOLOGICAL SUPPORT	18
STUDENT REPRESENTATIVES AND STUDENT POLITICS	22
ASSOCIATIONS	24
Living in Milan	25
LEONARDO E BOVISA	25
TRANSPORTATION	26
LIVING IN MILAN	29
RESIDENCES	30
FREE TIME	31

Reading Notes

References to the Poli website

This guide has been designed and written by students for students and is meant to be a helpful tool for anyone who reads it. However, some information may change or be presented in a general way for understanding purposes only. For this reason, each section will be accompanied by an official reference where you can find all the info you need: **the Poli website!**

How does it work? The Poli site is very intuitive: starting from the Home there are 3 main sections - **menu**, **info for**, **tools**.

All the sections will be presented with their official reference on **www.polimi.it**. For example, the part on the study plan will be **info for > enrolled students > English and Italian study plan and OFA**.

Inclusive language

This guide is written using an inclusive language, i.e. declining terms with the “neutral” vowel ə (3 in the plural) instead of using the overextended/generic masculine to make it as inclusive as possible for all gender identities. It is also an opportunity to raise awareness of the importance of language which, as a vehicle for our messages, must correspond to a system that does not discriminate, but involves!

Our work

Below some sections there is a part like this, to explain our work as student representatives on some issues. We are constantly working to improve student life!

Welcome to Poli!

Studenti Indipendenti is an organization made up of students like you: we are an open and inclusive reality, whose primary purpose is to bring a concrete improvement in the life of each student. We believe that real change can be achieved through the work of **representation** in the bodies and, above all, through the **participation** from the bottom of every student.

This is why for us representation is a **tool**, not a goal.

Being **independent** means not being subordinated to parties, lobbies or other subjects with external interests, therefore all our activities are self-financed and all our decisions are taken by our assembly, which is always **open** to anyone who wants to participate.

We work for a university that is truly educational and inclusive, that guarantees everyone the right to study and that is free from discrimination of any form.

If you want to come and meet us and/or participate in our activities, contact us! Or come and visit us in one of our classrooms

Leonardo Campus

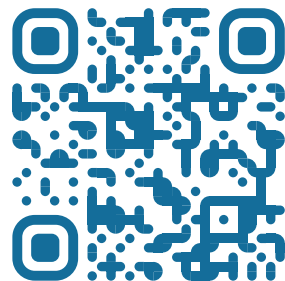
building 9, ground floor

La Masa Campus

building B21

Candiani Campus

building B2, first floor



The University

info for > current students > what to do after the enrolment

Teaching, courses and credits

info for > enrolled students > didactic activities and graduation exam

Now that you're in college, you'll find many differences with high school life. To begin with, university is no longer considered "compulsory schooling", and this means that you can choose whether or not to attend a course (unless it is compulsory attendance, which is common especially for Design, Architecture and Urban planning). You will soon realize that attending the courses will prove to be essential in most cases to pass the exam. Nonetheless, it is still possible to follow your own personal pace and keep pace individually.

Teaching has different characteristics depending on the School to which a course of study belongs. The Schools of the Politecnico are the following:

- **3I** (Industrial and Information Engineering)
- **ICAT** (Civil, Environmental and Land Engineering)
- **AUIC** (Architecture, Urban Planning and Construction Engineering)
- **Design**

Each course is mainly structured in **lessons**, **exercises** and **laboratory** hours. As you may have noticed in the official course timetable, we always start at :15, due to the so-called academic quarter of an hour, to allow you and the teacher to reach the classroom in time. Usually each teacher communicates to his students the exact starting time of the lesson.

In addition to the educational activities mentioned above, there are courses that include hours of **tutoring**, which are additional exercises to allow a general review and to better prepare for the exam.

Each course is worth a certain number of **CFU** (University Credits), usually from a minimum of 4 to a maximum of 12, based on the number of teaching hours and study load. For each course that is passed, the relative credits in the teaching career are credited. To obtain the degree you need 180 credits (if three-year), 120 (if master's) or 300 (if single-cycle): in fact, each year is structured with courses whose total credits make up about 60.

Our work - Didactics

Every month the **Consulta della Didattica** takes place, an institutional body that meets to talk about teaching at the Poli. We too participate as student representatives, bringing proposals and points of view from the student community.

Study plan and exams

info for > enrolled students > English and Italian study plan and OFA

The **study plan** is the list of courses that you intend to follow (and for which you want to take the exam), and is compiled at the beginning of the academic year: when compiling it, you must pay attention to the credits of the courses entered, in fact the **total number of CFU** influences the amount of tuition fees (see fees section). For many study programmes, especially in the first year, the study plan is **pre-compiled**: this means that the recommended courses are already entered and form the indicated study programme.

The study plan can be **modified** during the presentation phase and after the first semester, possibly adding or removing courses. But be careful: a course can be removed from or added to the study plan only if the modification takes place before the beginning of the course itself, for example during the semester modification, only the courses provided in the 2nd semester can be modified, while the courses of the 1st semester must be modified during the presentation phase. Consult the timetable ([tools > student deadlines](#)) to know the exact deadlines!

To pass a course and obtain the relative credits, it is obviously necessary to pass the exam. It may consist of a written test, which may be associated with an oral test and/or a laboratory test. The exams are distributed throughout the academic year in **exam sessions**: there is a session from the beginning of January to the end of February (winter session), one between June and the end of July (summer session) and one between the end of August and mid-September (September session). In each exam session, **exam sessions** are distributed (which are simply dates on which the exam can be taken), the annual number of which is defined by the School to which they belong (5 for 3I, Design, Architecture and Urban Planning, 6 for Civil Engineering and ICAT).

Some courses may include **partial exams** (or tests in progress), or rather the total exam is “split” into two (or more) sub-parts to be carried out during the semester. Each part will clearly deal with the topics addressed in the previous period. In case you fail to pass one of the partial exams, you will have to take the total exam. The academic calendar provides for a period of **suspension of teaching** both for exam sessions and for partial sessions (which are in early November and mid-April).

Once an exam has been passed, the evaluation obtained will be published on the online services. At that point the “publication phase” begins in which you will have two choices: **accept** or **reject** the vote. In case of acceptance (no need to do anything at an operational level), the evaluation will be recorded and will contribute to the average, in case of refusal instead it will be necessary to take the exam again. As long as the grade is still being published, there is the possibility of asking the teacher to view the test and clarify any doubts about the evaluation, even if often the professor himself determines a day dedicated to correcting the tests.

Our work - Exams and Appeals

We think that 5 exam sessions per year are few, especially considering that the ICAT school already provides for an additional exam session, as do most Italian universities (where **7** or more exam sessions are **scheduled per year**). We are working in the bodies to increase the number of appeals per year, to encourage freer study planning.

Politecnico: campus

It is certainly not easy to find your way around the buildings of the Poli, especially if your office is in Milan **Leonardo** or **Bovisa**: you can get lost very easily going from one building to another. The golden rule for identifying classrooms is this: the first character indicates the building, the next digit indicates the floor and the last digit indicates the location. For example, room 3.1.2 is located in building 3, first floor, second room.

Naturally, the most important service for students on each campus is the presence of **classrooms and study spaces**, together with libraries, canteens, bars and much more.

[menu > the Politecnico > opening timetable](#)

CLASSROOMS AND STUDY SPACES

[menu > campus and services > classrooms and study spaces](#)

When a classroom is not used for teaching activities, it can be freely used for self-study. Through the app or website (searching the internet for “polimi free classrooms”) you can locate the **free classrooms**. In addition to the “standard” classrooms, there are real **study spaces** located around the campus (see the attached map). Unlike informal spaces, a little more silence is welcome in a study room.

You can also find vacant classrooms and daily occupancies with the bot on telegram @PoliNetworkAuleBot

LIBRARIES

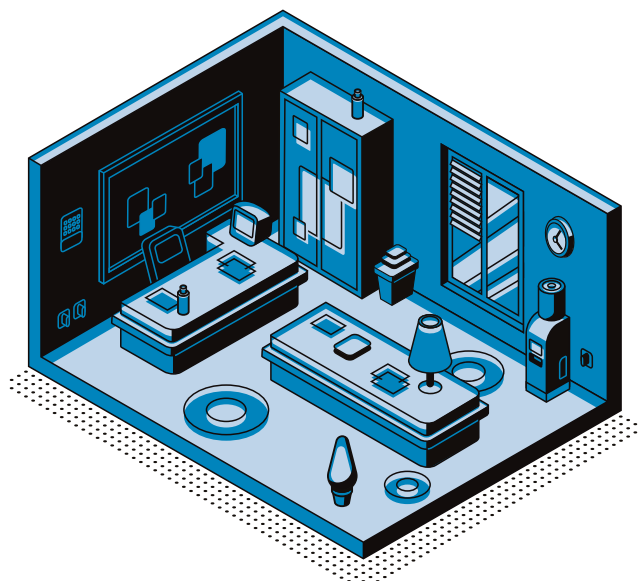
www.biblio.polimi.it

Furthermore, in each branch of the Politecnico there is a **library**, which can be accessed with the university card. In the library, in addition to picking up books or teaching materials, you can also study: there are various study stations and also group study rooms, which can be booked with the Affluences app. In the library, on the other hand, maximum silence is appreciated.

CANTEENS, BARS AND REFRESHMENTS

menu > campus and services > student accommodation and catering

In the main campuses of the Poli there are **canteen** services open for lunch and **bars** (open from morning until late afternoon). There is even an **ice cream shop** on the Leonardo campus! A complete meal has an average cost of € 7.00 and of course the scholarship meal vouchers can be used. In addition, there are various points scattered throughout the campus with **vending machines**, **drinking water dispensers** (cold and hot) and **microwave** spaces (so bring a water bottle and snacks!)



Our work - Spaces

Poli is the only university in Milan that has an open space **24 hours a day**: the patio and the architecture building 11! This is also thanks to the constant work of the student representation, and therefore we too are constantly asking to increase the study spaces and extend the hours. In fact, last year we managed to obtain new studio spaces and extend various opening hours!

Digital services

info for > current students > IT services

The digital services offered by the Poli are numerous, so we will list the main ones below, while for all the rest we invite you to go to the appropriate section on the site: you will find the list of ICT services and a welcome kit for freshmen and new students!

MAIL

Important communications are sent via the **e-mail service**, to which you are already automatically subscribed. The service works on Outlook, so you just need to configure the PoliMail account on the Outlook app (or on other email apps) or access the Outlook website. Emails relating to your course will be sent to your mailbox (such as communications, changes of classrooms or timetables, exam grades, teaching material), but also emails of more general interest. To communicate with teachers you will need to use this email account and not your personal one. The email address linked to you is of the **formname.surname@mail.polimi.it**, while that of the teachers is of the **formname.surname@polimi.it**. On the ict.polimi.it website you will also find a guide for **configuring** your mailbox on any device or app.

Tip: the Politamam, the student newsletter, arrives twice a month, in which you can find news from the representation and the numerous activities proposed by the various lists and associations of the Poli (including ours too!), at very affordable or even free prices thanks to the contribution of the Politecnico.

WEBEEP

tools > webeep oppure direttamente webeep.polimi.it

It's the digital teaching portal, where you can find all the **materials** and **information** of the courses you're enrolled in: handouts, exercises, exam topics, announcements, links to recordings. Enrolling in a course on WeBeeP it is done automatically if the course is validated in the Study Plan, otherwise you can always enroll manually.

A very useful thing is the possibility of enrolling freely in any course (unless the professor decides otherwise, which is rather rare) and also in courses of past years, in this way you can find more materials and possibly links to recordings of the whole course, always useful and comfortable.

Among the various WeBeeP **channels** there are also non-didactic channels but still useful for your course, such as that of the **CCS** (Consiglio di Corso di Studi) where you can find the contact details of the student representatives and other info on the course.

ONLINE SERVICES

tools > online services

The **online services**, on the other hand, contain more “formal” services: you will be able to consult the evaluations (and therefore choose whether to accept or reject them), see your average, pay taxes, access the DSU calls and grants, insert the ISEE, register for the calls for international mobility, request certificates, register for exams, consult the class timetable, book appointments with the secretariat and much more.

CLOUD SOFTWARE AND SERVICES

info for > enrolled students > IT services > list of services dedicated to students

Poli makes numerous software available for free, starting with the Office 365 suite (Word, Excel, PowerPoint, Teams,...) which is available to all students.

Many other programs and suites are available for certain courses or schools, for more info we advise you to consult our material guide which we will go into in more detail. Furthermore, with the license provided by Poli you have 1TB of space on OneDrive.

Altri servizi



PoliMi APP



PoliMi Library



Connessione a internet

Student services

SPORT

menu > campus and services > sports and free time or directly sport.polimi.it

The Poli offers many possibilities for practicing sports non-competitive level. They are organized several **tournaments** have been held and there are also official athletics and cycling **teams**. In the heart of the Leonardo campus is the **CS Giuriati**, a 36 thousand square meter sports center with a beautiful athletics track, three outdoor 5-a-side football pitches, a 3x3 basketball pitch, a rugby pitch, two indoor padel courts, a calisthenics area, an indoor arena with a multipurpose court and a gym distributed over two floors. The athletics track, the calisthenics area and the 3x3 basketball court of the Giuriati are accessible with the Basic season ticket which is valid for 12 months, costs **€30** and includes a free medical visit. Access to the gym and other activities (courses and tournaments) requires additional subscriptions/registrations. Each year the Politecnico organizes the **PolimiRun**, a 10km run open to all that takes place in Milan in the spring and in Lecco in the fall, and the **PolimiRide**, a bicycle race that takes place each year in a different territorial pole of the Politecnico.

In addition to this, in the various campuses you can find ping pong and table football tables to use freely!



POLIPRINT

menu > campus and services > stores > poliprint

In Milan (Leo and Bovisa), Lecco, Mantua and Cremona there is the Poliprint, where you can go and have **prints**, photocopies, plotting, binding and much more, inside the Poli! On the Leonardo campus the Poliprint is located in building 12, while on the Bovisa campus it is in ed. B1.

STUDENT SECRETARIAT

info for > current students > desks and offices for students

Sometimes (rarely) you can't solve your problems by getting information on the website or getting someone to help you, in which case it saves your **secretariat!** You can send an email, chat with an operator or go in person (by appointment), via online services or the app.

CONVENTIONS AND DISCOUNTS

info for > current students > tuition fees, scholarships and financial aid > products and services at special conditions

On this page you will find various discounts and concessions that may be useful to you. We particularly point out the **cultural** conventions, those for sustainable **mobility** and those with **lockers** present near the campuses, a real convenience.

Our work - Services

For us, representation also and above all means improving the student's **quality of life**, through the **improvement** and **expansion** of the available **services**. For this reason, on one hand we are attentive to the level of services offered by Poli and on the other we work to bring proposals that further improve the situation. We are currently working on the didactic material fund, in order to meet the looming cost of materials, especially from students of architecture and design.

International experiences

menu > campus and services > international mobility

There are several options for gaining experience abroad: the most classic is study mobility (such as the **Erasmus** programme), but there are also double degrees, summer schools and workshops. Generally, in order to access these programs, it is necessary to register for a **call** and have a certain average. For this reason, there is a greater tendency to participate in these programs in years following the first, in order to better assimilate the objective of these experiences.

Our work - ENHANCE

ENHANCE is a new way of understanding the international university, which aims to create a sort of "unique campus" among many European universities, **without physical and bureaucratic barriers**. Inside, students will be able to move freely, enriching their experience and training.

There are currently **10** universities that make up the ENHANCE alliance, among the best in Europe:

 ETH (Zurich),  TU Delft (Netherlands),  RWTH Aachen (Germany),  Chalmers (Sweden),  NTNU (Norway),  WUT (Warsaw),  TU Berlino (Germany),  Gdansk UT (Poland),  UPV (Valencia) and, obviously, the  PoliMi.

However, ENHANCE is a project still under construction, whose work is attended by our representatives, who meet each month with the representatives of the other European universities to bring the **student's voice** to the important points of this project in a unified way.

Welfare and useful info

University costs: fees

info for > current students > tuition fees, scholarships and financial aid

University (unfortunately) costs! On average, **around €1800** is spent a year on tuition fees at the Poli. These depend on many factors, but the main one is the **ISEE**. In fact, by presenting it, one typically falls into a contribution range lower than the maximum, paying in **proportion** to the income and assets of one's family unit. In particular, **between €0 and €22k** of ISEE there is total exemption (**no tax area**), **between €22k and €30k** there is partial exemption and **between €30k and €95k** one is placed in one of the contribution, which corresponds to increasing values of taxes to be paid. **Above the €95k** of ISEE, the maximum installment of €3,891.59 is paid.

For this reason it is very important to enter the ISEE on online services annually (by the end of March). To request the ISEE, you can go to a CAF or fill it out independently on the INPS website and, if you need help, you can contact us!

Other variables that affect tuition fees are:

Credits in the study plan - starting from 75 credits you pay **30% more**, between 32 and 46 credits you pay **25% less** and with less than 32 credits you pay **50% less**, therefore it is important to pay attention to the credits included in the study plan

Merit - you can request a **50%** exemption if you have an average higher than **27** or **100%** if you have an average higher than **29** up to the fourth tax bracket, as a second merit requirement it is necessary to obtain a minimum number of credits which varies according to the year of attendance.

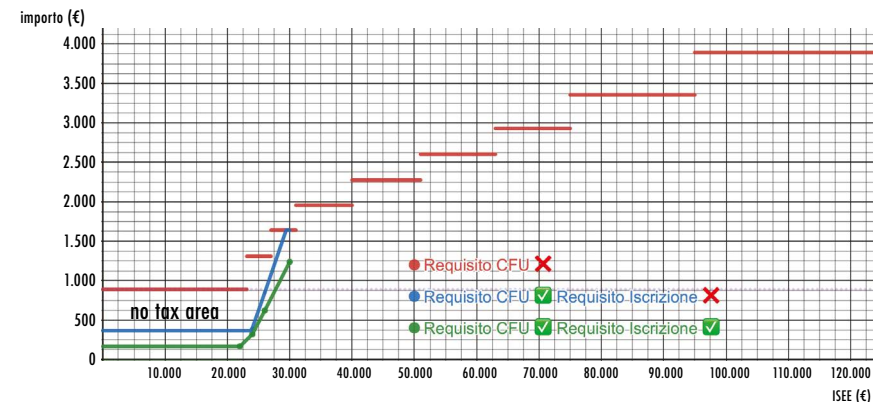
Other exemptions on request - including total exemption for students who are parents with small children, 25% exemption for working students and 10% exemption on their own ISEE bracket for simultaneous enrollment of brothers/sisters.

WHEN AND HOW TO PAY TAXES

Net of exemptions, the total tax will be made up of two factors: one part is fixed, and amounts to **€165.59** (which includes €140 of regional tax, €16 of revenue stamp and €9.59 of insurance); the remainder corresponds to the **all-inclusive fee** (which depends on the factors mentioned above).

University fees are paid twice a year: once at the beginning of the first semester (**1st installment**) and once towards the end of May (**2nd installment**). The first installment can be up to €888.59 (so those with an ISEE below a certain threshold will only pay the first installment and not the second).

When it's time to pay the installment, an official email arrives, after which you can access the online services and go to the "taxes and financial benefits" section.



Our work - taxes

The **no tax area** was a measure that we obtained in 2016 by working in the National Council of University Students (**CNSU**), and since then we have continued to fight for it to be raised, to allow everyone to attend university and **break down economic obstacles**. Several universities in Italy have independently increased the no-tax area to values higher than the current €22k, and we are working to ensure that Poli also increases it.

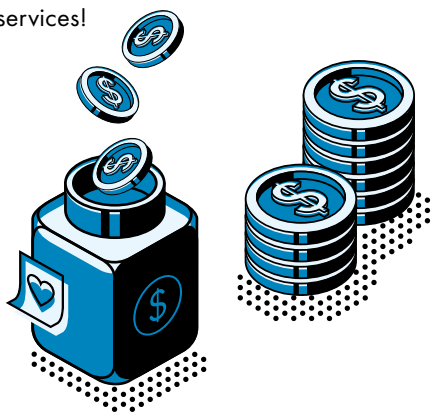
Scholarships, DSU call and 150-hour call

SCHOLARSHIPS

info for > current students > Tuition fees, scholarships and financial aid > university financial aid - diritto allo studio universitario (dsu)

Scholarships are a tool provided for by the constitution to allow those who need it most to financially support their studies. Every year (in June) the DSU call opens, which makes available to those who meet the requirements (in terms of income and merit) a certain amount of money and other services, the main one being the subsidized catering service with **daily meal vouchers**. The amount of the scholarship and the meal voucher depend on the status: on-site, commuter, off-site. For non-resident students there is also the possibility of applying for a place in the residence. To make a request there is the appropriate section on online services!

In addition to paying attention to the requirements for access to the scholarship, you must read the regulations carefully and respect the criteria for maintaining the scholarship (including the achievement of a certain number of credits), in order not to incur a refund.



Our work - right to study

Unfortunately, the funds for the scholarships would not be enough for everyone and there would be those who are **eligible** for the scholarship but not **beneficiaries**. Every year we ask (and obtain) that the Politecnico covers the necessary funds out of its own pocket, **to guarantee everyone the right to study**. We are also working at a national level to ask for more attention to the Italian university system, which is currently sadly underfunded.

WORKING AT THE POLI - CALL FOR APPLICATIONS 200 HOURS

menu > campus and services > work and collaborations > paid collaborations

The call for **paid collaborations** allows those who have access to **work for the Politecnico**, carrying out support tasks both for **ordinary** activities and for tutoring **teaching activities**. The fee varies from €12 to €16 per hour. The call opens at the beginning of the first semester and is annual, while with regard to tutoring activities only, there is also another half-yearly call managed by the individual Schools. The maximum number of hours each can do is 200 hours.

Our work - Call for paid collaborations

Since the call is included among the interventions envisaged for the right to study, in 2021 we presented a **proposal** to modify the **access criterion**, better enhancing **merit** and above all introducing an **income criterion**, in order to meet those who have economic and he needs to earn some extra cash. Our proposal was approved in the **Student Council**, the discussion body between the student representatives of the Poli.

Health care, Polipsi and protection from discrimination

POLIPSI

menu > campus and services > psychological wellbeing

PoliPsi is a counseling and psychological and psychotherapeutic **support** service aimed at students and doctoral students of the Politecnico. It makes use of psychologists and psychotherapists who are experts in relational dynamics and learning processes, and offers a place to discuss and receive support in moments of discomfort, uncertainty and difficulties related to **study** or **personal events**. In particular, in addition to a more purely psychotherapeutic service, to address doubts regarding the academic path undertaken or delay in studies, the service also offers a path of didactic psychological counseling, improving university placement and academic performance.

HEALTH CARE

info for > current students > health care

The Politecnico di Milano does not have agreements with the local health facilities, therefore non-resident students must temporarily change their basic doctor, going to the Health Protection Agency (**ATS**, which corresponds to the ASL in other regions) closest to the new domicile.

Our work - general practitioner

It is paradoxical that one is forced to choose to take advantage of health services only in one place, especially for those who are away from home: if one does not change the **general practitioner**, one cannot be treated in Milan, while if one changes one cannot be treated in the city of origin. This is why we are working in **CNSU** to ensure that anyone is assigned a basic *medicæ* even in the city where they study in addition to their residence.

MULTICHANCE

menu > campus and services > equal opportunities and inclusion > disabilities and SPLD

Specialized support to students and doctoral students with **disabilities** and **SPLD** (Specific Learning Disorders) or in certified very critical health conditions is guaranteed by a multidisciplinary team (Multichance PoliTeam - MCPT) which elaborates personalized planning and provides specific technical and educational services in collaboration with teachers, starting from the entrance tests and throughout the academic career.

Our work - multichance and SPLD

Sometimes the **compensatory tools** risk damaging the student more because they increase the incidence of each error, so we would like there to be more **regulation** of support measures. We also believe that more teacher **training** is needed, especially on SPLD and we are working to create a space for discussion between students and between students and teachers.

CAREERS ALIASES

menu > campus and services > equal opportunities and inclusion > lgbti+

On 31 January 2023, the new version of the protocol for activating an **alias career** within the Politecnico di Milano came into force. This tool allows **gender-affirming** students to live their career within the University in respect and protection of their gender identity even without having necessarily started a medical and/or legal path for the ratification of documents or until this hasn't happened yet.

There will therefore be the possibility, in the face of the recognition of a **psychological path**, to have one's own institutional email address and a new Policard in which only the **chosen name** appears.

Our work – Careers Alias

After almost 4 years of work for our protocol modification proposal we are certainly happy that a new, **more updated** version has been approved, however we believe that the work to be done to have a truly inclusive protocol towards all gender identities and based only on 'personal and non-personal **self-determination** on often long and expensive paths is still long, but necessary. This is why we will continue to fight in the organs until the alias career can be accessed through **only a self-certification** in which to indicate the chosen name.

PROTECTION FROM DISCRIMINATION

menu > campus and services > equal opportunities and inclusion > Protection from discrimination

The Politecnico acts in the protection from discrimination through actions, collaborations and University Bodies in order to promote Equal Opportunities and counteract any kind of discrimination and violence. For students and doctoral students victims of stalking, a dedicated counter is active: stalkingsos@polimi.it.

There are also several bodies and figures within the university to whom you can turn in case of harassment, discrimination or other problematic situations. These include:

SINGLE GUARANTEE COMMITTEE (CUG)

[menu>organisation>university bodies>single guarantee committee](#)

The CUG is responsible for promoting equal opportunities within the University with measures to prevent and counteract all forms of discrimination; it can be contacted by email: cug@polimi.it (the box is handled with absolute respect for privacy).

TRUSTED ADVISOR

[home>Politecnico>Organisation>University Bodies>Confidential Counsellor](#)

He is an external figure from the University who collaborates with the CUG and provides advice and assistance to those who report being victims of discrimination, bullying, sexual harassment, moral and psychological harassment. He receives by appointment at the CUG office (ed.10, Leonardo Campus) and can be contacted via consiglieradifiducia@polimi.it.

STUDENT ADVOCATE

[info for>current students>student advocate](#)

Whoever complains of behavior that does not comply with the University regulations and the charter of students' rights and duties can be contacted. The defender intervenes following a non-anonymous complaint (by going to his office, by post, by telephone or e-mail defenderdeglistudenti@polimi.it) and try to settle the matter or inform the responsible party of the problem, in any case protecting the student from any retaliation.

Student representatives and student politics

[info for > current students > representatives and associations](#)

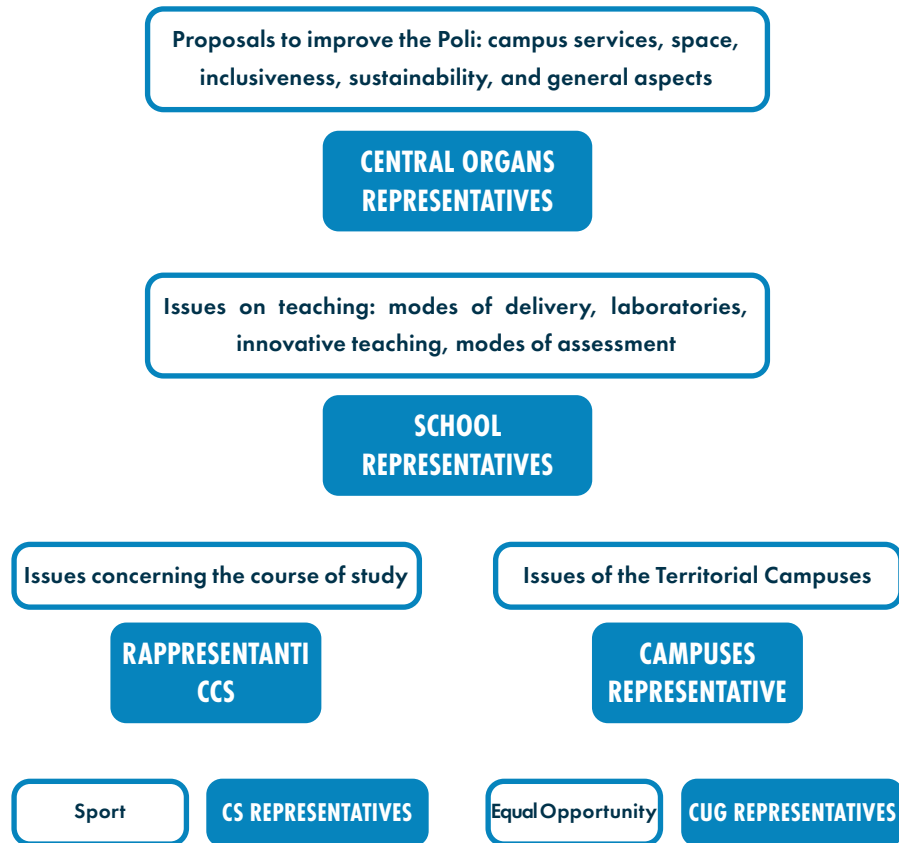
Representative lists are present to guarantee the voice of students in the bodies of the Politecnico. **Elections** are held every two years to elect student representatives in the various bodies of the Politecnico, where the proposals of the elected lists are brought. Representation is very important for the student, and thanks to it many advantages, both practical and otherwise, have been obtained. If you are interested in the world of student representation and politics, do not hesitate to contact us! The representative lists are:

- **Lista Aperta**
- **Studenti Indipendenti**
- **Svoltastudenti**
- **La Terna Sinistrorsa**

The **central bodies** of the Politecnico are the **Academic Senate** and the **Board of Governors**, where decisions on university initiatives are made and where the budget is drafted and approved. Six students are elected in the central bodies: 4 in the academic senate and 2 in the board of directors. In addition to the central bodies, there are also bodies of the four schools (3I, ICAT, AUIC, Design), i.e. the **School Joint Committees** and **Commissions**. In each commission, 5 students and 5 professors are elected, who are responsible for monitoring the progress of the school and checking the educational offer. Furthermore, there is a body for each course, called the Study Course Council (CCS), made up of students and professors. Their task is to participate in the choices relating to the course of study.

The students elected in the central bodies and joint commissions are part of the **Student Council**, where only the students decide the initiatives to be taken within the representation.

STUDENT REPRESENTATIVES: WHO TO CONTACT?



Our work - representation

For us, representation is a **means** to improve student life, not an end. We also believe that representation does not only take place in the bodies but requires constant **dialogue** with the student. Our representation action is enriched through continuous sharing with other Milanese and Italian universities. For us, acting as a representative means being available to the student in the event of any **need** or **injustice**.

Associations

info for > current students > representatives and associations

At the Politecnico there are various **student associations**, which receive funding from the university in order to offer the student activities or organized trips, at very convenient prices. Associations can be of different types: sporting, cultural, recreational, international, engineering, political, etc. We invite you to discover the various Poli associations and get to know the ones that interest you most, almost all of them have their own social channels and offer a great variety of events and initiatives that you can also discover through the PoliTamTam!

At the moment, the various associations present at the Poli are:

- Association of Mathematical Engineers
- Muslim Students Association – Milan Politecnico
- Automation Engineering Association
- BEST - Board of European Students of Technology
- Biomedical Engineering Association
- BIT PoliMi
- Popular Catholics
- Enactus Polimi
- Entrepreneurship Club Polimi
- ESN – Erasmus Student Network
- Fly Mi
- Junior Enterprise Milan Politecnico
- MESA - Milan Engineering Student Association
- Nanoscience Innovation and Nanotechnology Engineering
- Polyhedron
- Polyphony
- Polimi Data Scientists
- POLY.RADIO
- Poliran
- PoliSpace
- Politecnico University Open unix Labs (POuL)
- Resilient gap
- Polimi Chess
- SIT Polimi
- Skyward Experimental Rocketry
- Society of Petroleum Engineers Politecnico di Milano Student Chapter
- Starting Finance Club PoliMi
- Marble Theater
- WoShou - Chinese Italian Polimi Students Association

Living in Milan

Leonardo and Bovisa

Bovisa and **Leonardo** (located in the **Città Studi district**), as well as being the two headquarters of our university in Milan, are real districts of the city: while Bovisa is a pole exclusively linked to the Politecnico, Città Studi is a general point of reference also for students of the scientific faculties of the University of Milan, as well as for architecture and engineering. Città Studi, which is located in a more central position, is better served by public transport and is more active on a social level, while Bovisa is more of a suburban district, almost detached from Milan, or at least not as lively. In both cases, fortunately there are various points of aggregation for the students of the Politecnico, such as bars, restaurants, clubs, supermarkets and study spaces.

BOVISA

Bovisa is well served by trains that stop at the railway station, halfway between the **Candiani** campus and **La Masa**. **Trains** run frequently in the morning and in the evening, and although there are sometimes delays due to breakdowns or technical problems, you hardly ever wait more than a quarter of an hour for a train to arrive. Suburban lines S1, S2 and S13 pass through Bovisa station.

It is also possible to catch trains at **Villapizzone** station (suburban lines S5, S6 and S11), located a 5-minute walk west of the La Masa campus, although trains are less frequent. There is also a very comfortable train that connects Villapizzone with Lambrate in 10 minutes, it is the one that leaves Bergamo in the morning and arrives in Garibaldi, and vice versa in the evening.

Furthermore, the **2** (tram that takes you to the center, passing by the Duomo and Porta Genova) and the **92** (trolleybus that runs along the external ring road to Piazza Lodi, stop of the yellow metro line M3, also passing through Città Studi) pass through Bausan square. Bovisa is also served by the **82**, which arrives at Zara M3.

CITTÀ STUDI

Città Studi is also crossed by the train (**Lambrate** station) and by the green metro (M2), which stops at **Piola** and Lambrate. The main trams in Città Studi are number **33** (which departs from Lambrate and passes through Città Studi and the districts of Porta Venezia, Porta Nuova, Garibaldi) and number **19** (which also departs from Lambrate and passes through Città Studi and the Duomo, arriving Fair and MacMahon, to the west). The main buses are the **90** and **91** (running the city ring road and also running at night on weekends).

Trasporti

Fortunately, Milan's transportation system works efficiently and continuously to provide services throughout the city. The system consists of trains, subways, buses, streetcars, and car, bicycle, and scooter sharing services. Most of these services are operated by **ATM**, which provides subsidized fares for students. The annual card includes subway, train, bus, and streetcar travel throughout the urban area (outside the urban area a surcharge must be paid) for **€200** per year or **€22** per month. The **BikeMi** service (a bike share with fixed stations) can be added to the annual card for €12 per year.

PUBLIC TRANSPORT

The **subway** allows you to easily reach every part of the city quickly, it includes 4 lines: the **red** (M1), the **green** (M2), the **yellow** (M3), the **blue** (M4) and the **lilac** (M5).. ATM it also has an agreement with **Trenord**, thanks to which trains can be used in the urban area even with only an ATM card (for example, you can go from Lambrate to Bovisa by train without having to have a Trenord card or a train ticket). The train (which the Milanese call Passante) is also very useful for quick travel and allows you to easily reach the Milanese railway stations, often connected to the underground. Both trains and metros operate from 6am until around midnight, with extended hours in the summer.

The surface means, on the other hand, are **trams** and **buses**. The former operate radially from the center to the peripheries, while the latter have more extensive and varied routes. Surface vehicles generally operate from 6am to 2am. An exception is the lines **90** and **91**: these two buses (or rather, trolleybuses) follow the route of the outer ring road in both directions (90 clockwise and 91 anticlockwise) and run 24/7. The ATM network also includes other **night buses**: in addition to 90 and 91, the internal circular N25/26 and the **replacement metro lines** M1, M2, M3 and NM4 operate all night with a frequency of twice an hour; to which are added another 9 night lines at the weekend, which allow you to move at any time without having to resort to taxis or having to walk too much.

BIKE AND BIKE SHARING

ATM also has a **bike sharing service** (BikeMi), the first half hour is free and every subsequent half hour has a surcharge (which also applies to pedal assisted bicycles). The annual card costs €29 thanks to the agreement with Poli, reduced to €12 if you have an ATM annual card and are under 27 years old. There are also other free-flow bike sharing services (ie without stalls), with electric and pedal assisted bikes: **Lime** and **RideMovi**. For frequent use of the bike, it is advisable to buy your own bike (new or used): having a bike in Milan is very convenient, you can reach every destination in a short time and you are not dependent on the timetables and costs of public transport. On the Leonardo campus there is a new free-use bicycle repair station between buildings 5 and 9, while in Bovisa there is the **Policiclo** student cycle shop and velostations for safe parking and **repairs**!

SHARING MOBILITY

info for > current students > tuition fees, scholarships and financial aid > products and services at special conditions > sustainable mobility

here are also several **car** and **scooter sharing** services. The free-flow services allow you to park freely within the operating area in each municipal car park, free (white lines), paid (blue lines) and for residents (yellow lines).

Among these are **Zity**, **Enjoy**, **e-Go Drivalia** and **ShareNow**, which are especially useful for travel within Milan due to the flexibility of parking and especially at night, when surface vehicles are less frequent.

Rates generally range between **19** and **35** cents per minute. As for car-sharing with fixed stalls, useful mainly for longer trips, there is **E-vai**, which also allows rentals between various cities within Lombardy. Rates start from 12€ for two hours and are affordable for longer use (for example, they are convenient for moving!). As for **scooter sharing** operators, they operate a free-flow service but with a smaller operational area than car sharing. The operators are **Cooltra**, **CityScoot**, **ZigZag**, and **GoVolt**, with rates that range between **29** and **35** cents per minute. Recently, sharing services have sprung up for electric scooters, which are useful for short trips but have a limited coverage area.

The Politecnico has various agreements with many of these sharing operators, which allow you to travel at **reduced rates** per minute or to save on enrollment costs or fixed rental costs. To find the discounts for students, just go to online services in the relevant section under sharing mobility. If you often use these means, also consult the various offers with packs of minutes at cheaper prices.

Using a car in Milan can be expensive, slow and stressful, and for this reason it is recommended only in the absence of alternatives: finding parking is a challenge even in less central areas (especially Città Studi), and the presence of traffic becomes feel especially in the morning and in the evening.

Our job - transport

Thanks to years of claims, we have managed to obtain a reduction on **Trenord passes** for students from the Lombardy Region, making life easier for many commuters.

Inside the Poli, on the other hand, we are working to increase the number of bike stalls and to reduce the cost of transport as much as possible, also paying attention to extending the coverage area of the sharing services to the campuses.

Living in Milan

Milan is the city with the most expensive rents in Italy so it is very difficult to find houses for rent at affordable prices, also because the owners often put several stakes before the rent, which makes finding a room even more difficult.

However it is not impossible: to find an apartment to **rent** there are various classified sites (a quick Google search is enough), groups on social networks to find roommates or even announcements on notice boards in the Politecnico campuses and if you avoid the central areas you can find something.

For the **Bovisa** campus, in fact, it is easier to find affordable accommodation near the university or in neighboring districts such as **Bovisasca**, **Affori**, **Villapizzone** and **Dergano**, connected via local bus lines, above all because they are more peripheral and less attractive point of view of the services available.

On the **Leonardo** campus, finding a room can be more complex, as the Città Studi area is one of the most sought after in the city and therefore generally has higher prices. However, it is not totally excluded, as houses can sometimes be found at more reasonable prices. We recommend the neighboring districts of **Loreto**, **Casoretto**, **Feltre**, the axes of **Viale Monza** and **via Padova-via Palmanova**, **Lambrate**, **Ortica** and **Dateo** as more affordable but still easily accessible from campus by public transport or by bicycle.

In general, we recommend checking the accessibility of the location of the room to **public transport**, as even more distant districts can be reached in a short time thanks to the railway link, the subway or other means.

RESIDENCES

[menu > campus and services > student accommodation and catering](#) or [residences.polimi.it](#)

There are various possibilities for hosting non-resident students studying in Milan: **public** residences managed by the university, **private** residences (possibly affiliated with the university) or renting a room or an **apartment**. To access the residences of the Politecnico with a discounted rate, you must do so through the DSU call for the right to study, otherwise you can book the accommodation at the full rate. The residences of the Politecnico are:

- Residenza "Casa dello Studente Leonardo da Vinci" (non disponibile per l'A.A. 2023/24)
- Residenza "Isaac Newton"
- Residenza "Vilfredo Pareto"
- Residenza "Einstein"
- Residenza "Marie Curie"
- Residenza "Galileo Galilei" (solo per studenti DSU)

Altre residenze convenzionate si possono trovare sul sito dove si possono trovare anche i cosiddetti "collegi di merito", residenze universitarie con requisiti di merito per potervi alloggiare.

Our work - Residences and rentals

After repeatedly denouncing the need for more investment in university residence halls university, especially in the Academic Senate and the infrastructure committee, the Polytechnic will use part of the NRP funds to create **new residences**, increasing thus the beds available to the student both DSU and non-DSU beneficiaries. In addition, we have always fought for the Politecnico in agreement with the Municipality of Milan to stipulate and incentivize an **agreed regulated rent** to allow even those who cannot find housing in residence to have subsidized rents.

Free time

What to visit: Milan is full of attractions, there are various interesting **museums** (The Science and Technology museum, the Brera art gallery, the Novecento museum, the Castello Sforzesco museums...) and points of interest such as Leonardo's painting **The Last Dinner** in the refectory of the church of Santa Maria delle Grazie, the **Castello Sforzesco**, the basilica of **Sant'Ambrogio**, the optical effect of Bramante in the church of **San Satiro**, and of course the **Duomo** of Milan. Other places to visit are **Sempione Park** (very popular for a break in the greenery, or even for running or picnicking), the **Navigli** basin in Darsena, the **Arco della Pace**, La Scala, the **Columns** of San Lorenzo, the **Galleria** Vittorio Emanuele, the **Monumental** Cemetery (whose tombs and mausoleums in addition to housing illustrious figures are also architectural masterpieces) and the various neighborhoods in the center, each with its own history and gems that go unnoticed by mainstream tourists.

Furthermore, in Milan there is something to do practically every day: events, exhibitions, fairs, concerts, festivals... You can check the events step by step on sites like MilanoToday or Milano da Scrocco, or even better by looking at the initiatives, visits and trips offered from the Poli student associations in the PoliTamTam newsletter!

Where to study: in addition to the university spaces, you can study in one of the **libraries** of the Municipality of Milan, where you can also borrow books and more using your health card. In addition to libraries, obviously a bar or a place that is open to coworking can also be a good place to study, but also **public parks** and open spaces equipped with tables or benches.

Where to go out at night: the most popular and most popular places in the evening are many, and very different from each other: in the Darsena and in the **Navigli** area there are many places that have aperitifs outdoors and it is very popular, especially on Saturdays. A similar alternative is **Brera**, **Isola** or the **Colonne** di San Lorenzo area. The **Piazza Duomo** area also has many clubs, with less popular but very chic prices. More down-to-earth places are the Isola district, the **Porta Venezia** and Buenos Aires area and the

NoLo district around Piazza Morbegno. In the **Città Studi** area there are many places to go out in the evening, real meeting points for Milanese universities, both on and off site. Certainly a very populated place is **Piazza Leonardo da Vinci** (in front of the Rectorate of the Politecnico), commonly known as Piazza Leo, where in the evening, especially in spring and summer, people meet for an aperitif and sometimes parties and outdoor DJ sets are organised. Also north of Città Studi is the **Naviglio Martesana**, the least known of the three Milanese canals; in the first part of Milan between via Melchiorre Gioia and via Padova there are various farmhouses and bars open in the evening at affordable prices, as well as various green areas where you can hang out with your friends.

In the Bovisa campus area there isn't much nightlife in the evening but there is the ARCI **La Scighera** club which promotes events, meetings and evenings at university prices, as well as guaranteeing the possibility of using the space as a study room on Sundays.

LATO B, THE OTHER SIDE OF MILAN

Lato B is a space for young people and students in the Garibaldi/Monumental area, easily reachable by train, metro or tram. The project of Side B is to provide spaces for creating, inventing and experimenting with ideas and practices outside the schemes and logics of profit and commodification. Among the most popular initiatives there is the **study room** every Sunday, the university **aperitifs** of "Alza la Media", the **stand up comedy** evenings and the "**Theatrical Mondays**". LatoB is an Arci club, therefore it will be necessary to have an Arci card to enter.

Furthermore, for all the information on what to do in Milan, from socializing to health, passing through study rooms and places to play sports, Side B has created collaborative maps through the **Orientami** project in which all the places in Milan that they offer services for young people and in general they have affordable prices for all budgets with a brief description and contacts.

If you find such places not marked on the maps, add them to help those who will visit after you! www.orienta-mi.it

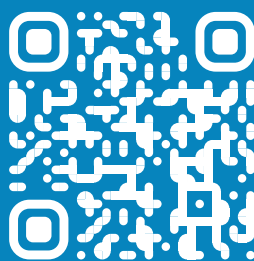
CONTACTS



Instagram



Mail



Whatsapp

Davide
Emiliano
Sam

389 598 9733
366 293 6470
346 633 4267